



MALLINSON
& CO

INNOVATIVE PROPERTY EXPERTS

Thurgoland Hall Fold, Thurgoland, Sheffield, S35 7EA

Offers Over £425,000

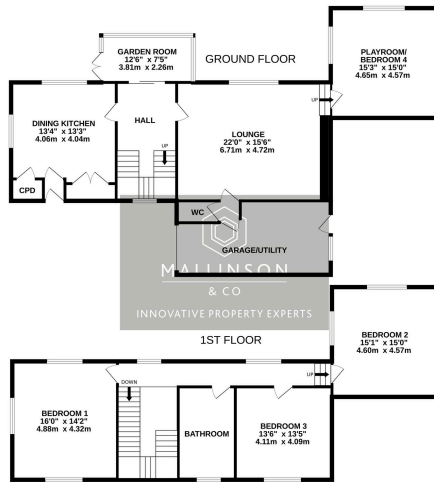
🛏️ 4 🚿 2 🛋️ 2



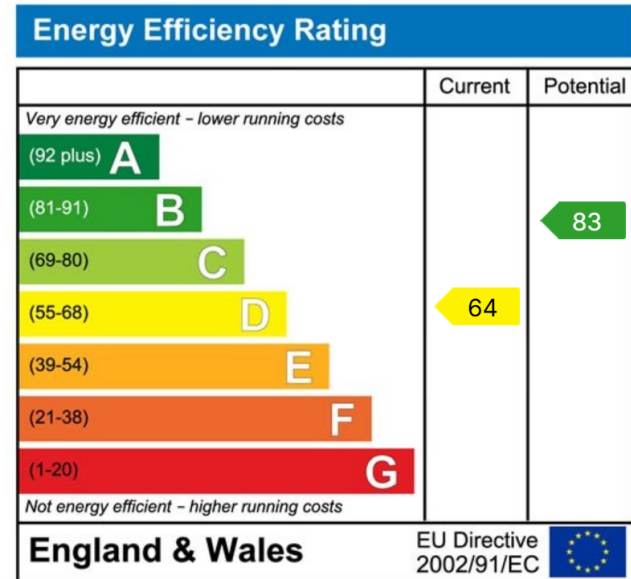
- PERIOD DETACHED FAMILY HOME
- 2 RECEPTION ROOMS
- MODERN DINING KITCHEN
- SOUTH WESTERLY FACING GARDENS
- CLOSE TO LOCAL AMENITIES, SCHOOLING & TRANSPORT LINKS
- 4 BEDROOMS
- SPACIOUS ACCOMMODATION APPROACHING 2000 SQ FT
- INTEGRAL GARAGE & OFF STREET PARKING
- FANTASTIC FAR REACHING VIEWS
- SOUGHT AFTER VILLAGE LOCATION CLOSE TO OPEN COUNTRYSIDE



SIMPLY OUTSTANDING ... SITUATED WITHIN THE HEART OF THURGOLAND OFFERING STUNNING PANORAMIC VIEWS IS THIS SUBSTANTIAL STONE BUILD PERIOD HOME, BOASTING APPROXIMATELY 2000 SQUARE FEET OF ACCOMMODATION. THE PROPERTY FEATURES A STUNNING OAK STAIRCASE, GALLERIED LANDING, DINING KITCHEN, TWO VERSATILE RECEPTION ROOMS AND FOUR BEDROOMS. LOCATED WITH CLOSE PROXIMITY TO HIGHLY REGARDED LOCAL SCHOOLS AND OFFERS EASY COMMUTING LINKS TO BOTH BARNSELEY AND SHEFFIELD.



Whilst every attempt has been made to ensure the accuracy of the floorplan contained here, measurements of doors, windows, rooms and any other items are approximate and no responsibility is taken for any error, omission or mis-statement. This plan is for illustrative purposes only and should be used as such by any prospective purchaser. The services, systems and appliances shown have not been tested and no guarantee as to their operability or efficiency can be given.
Made with Metropack C2022.



**INNOVATIVE
PROPERTY
EXPERTS**

Mallinson & Co

Office: 01226 414 150

Email: ben@mallinsonandco.co.uk

Web: www.mallinsonandco.co.uk

Suite 2, Penistone 1, St. Mary's Street, Penistone, Sheffield S36 6DT