



MALLINSON
& CO

INNOVATIVE PROPERTY EXPERTS

Stainborough Fold, Greno View, Hood Green, Barnsley, S75 3HQ

Offers Over £695,000

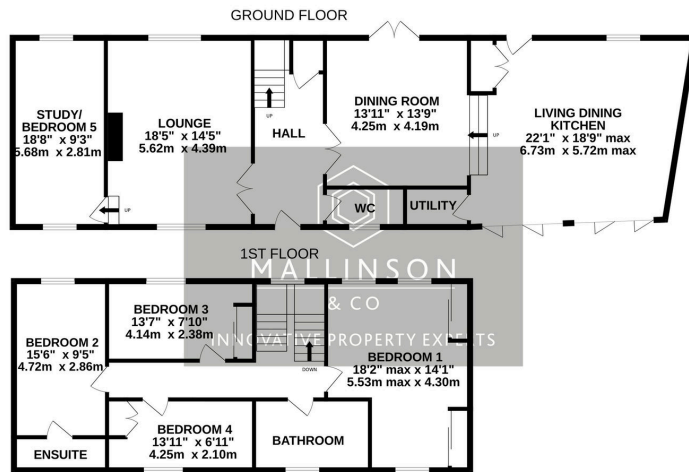
🛏️ 4 🚿 2 🛋️ 3



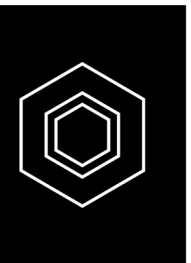
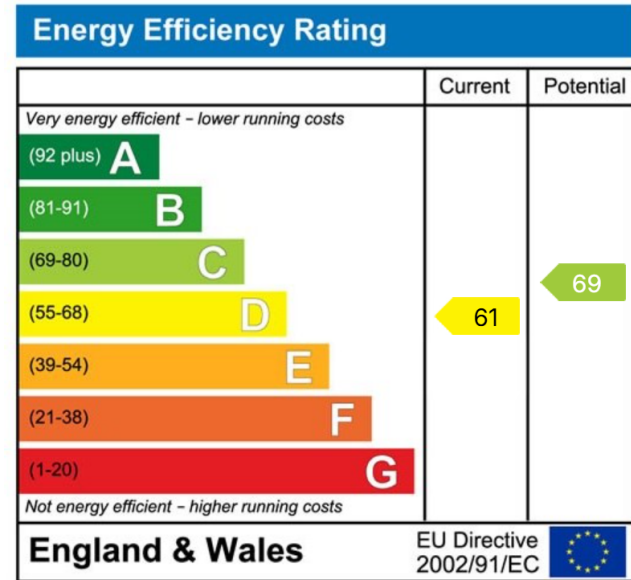
- BARN CONVERSION
- 4 BEDROOMS
- 3 RECEPTION ROOMS
- OPEN PLAN KITCHEN & UTILITY
- WEALTH OF CHARM AND CHARACTER
- MODERN 4 PIECE BATHROOM & EN SUITE
- DOUBLE GARAGE & OFF STREET PARKING
- GOOD SIZED GARDENS
- FANTASTIC RURAL VIEWS
- EASY ACCESS TO OPEN COUNTRYSIDE, AMENITIES & TRANSPORT LINKS



SIMPLY EXCEPTIONAL ... LOCATED IN THE SEMI RURAL VILLAGE OF HOOD GREEN, IN A SMALL HAMLET OF CHARACTER PROPERTIES IS THIS TRULY OUTSTANDING, FOUR BEDROOM HOME, OFFERING A WEALTH OF ACCOMMODATION. THE PROPERTY IS BEAUTIFULLY APPOINTED THROUGHOUT, FEATURING THREE RECEPTION ROOMS, OPEN PLAN KITCHEN, EN SUITE, DOUBLE GARAGE AND IS SET WITHIN EXTENSIVE GROUNDS OFFERING RURAL COUNTRYSIDE VIEWS. THE PROPERTY IS WITHIN EASY ACCESS TO OPEN COUNTRYSIDE, LOCAL AMENITIES AND THE STRAFFORD ARMS PUBLIC HOUSE.



TOTAL FLOOR AREA : 2026 sq.ft (188.2 sq.m.) approx.
Whilst every attempt has been made to ensure the accuracy of the floorplan contained here, measurements of floors, walls, doors and any other items are approximate and no responsibility is taken for any error, omission or mis-statement. This plan is for illustrative purposes only and should be used as such by any prospective purchaser. The services, appliances and appliances shown here are not tested and no guarantee as to their operability or efficiency can be given.
 Made with Metropix (2022).



**INNOVATIVE
PROPERTY
EXPERTS**

Mallinson & Co

Office: 01226 414 150

Email: ben@mallinsonandco.co.uk

Web: www.mallinsonandco.co.uk

Suite 2, Penistone 1, St. Mary's Street, Penistone, Sheffield S36 6DT