



MALLINSON
& CO

INNOVATIVE PROPERTY EXPERTS

Westfield Avenue, Thurlstone, Sheffield, S36 9RL

Offers Over £185,000

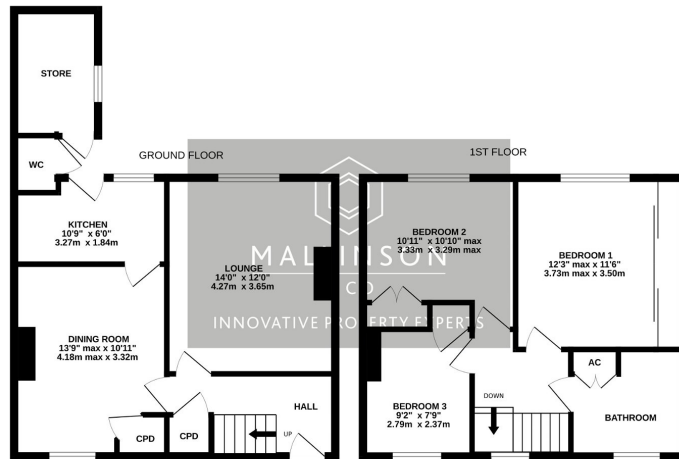
🛏️ 3 🚿 1 🚪 2



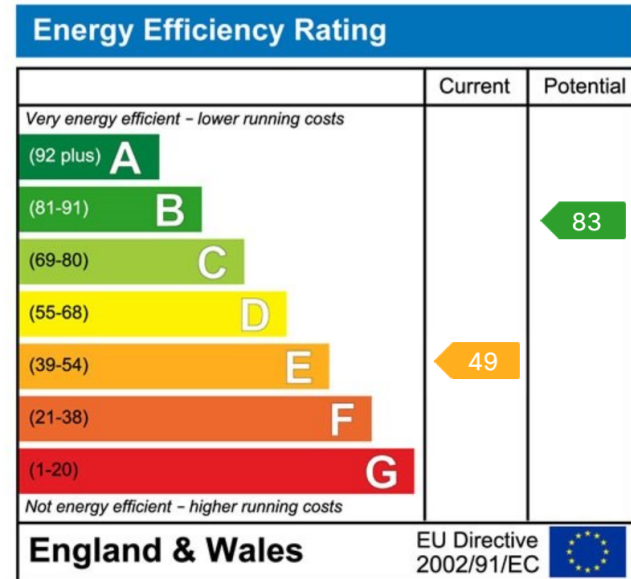
- SEMI DETACHED
- 3 BEDROOMS
- 2 RECEPTION ROOMS
- OFFERING FURTHER DEVELOPMENT POTENTIAL
- WET ROOM STYLE BATHROOM
- SOUTH FACING REAR GARDEN
- OFF STREET PARKING
- DECEPTIVELY SPACIOUS
- HIGHLY REGARDED VILLAGE LOCATION
- CLOSE TO LOCAL AMENITIES, SCHOOLS, TRANSPORT LINKS & TRANS PENNINE TRAIL



ARE YOU LOOKING FOR A PROJECT? ... LOCATED IN THE HIGHLY REGARDED VILLAGE OF THURLSTONE IS THIS DECEPTIVELY SPACIOUS, THREE BEDROOM SEMI DETACHED PROPERTY, OFFERING A WEALTH OF DEVELOPMENT POTENTIAL TO CREATE A SUPERB FAMILY HOME. THE PROPERTY CURRENTLY FEATURES, TWO RECEPTION ROOMS, OFF STREET PARKING, FRONT AND REAR GARDENS AND IS WITHIN EASY ACCESS OF THE TRANS PENNINE TRAIL, AS WELL AS BEING WELL SERVED BY LOCAL AMENITIES, SCHOOLING AND TRANSPORT LINKS.



Whilst every attempt has been made to ensure the accuracy of the floorplan contained here, measurements of doors, windows, rooms and any other items are approximate and no responsibility is taken for any error, omission or mis-statement. This plan is for illustrative purposes only and should be used as such by any prospective purchaser. The services, systems and appliances shown have not been tested and no guarantee as to their operability or efficiency can be given.
Made with Metropix ©2024



**INNOVATIVE
PROPERTY
EXPERTS**

Mallinson & Co

Office: 01226 414 150

Email: ben@mallinsonandco.co.uk

Web: www.mallinsonandco.co.uk

Suite 2, Penistone 1, St. Mary's Street, Penistone, Sheffield S36 6DT