



MALLINSON  
& CO

INNOVATIVE PROPERTY EXPERTS



## 2, St. Helens Place, Barnsley

Offers Over £200,000

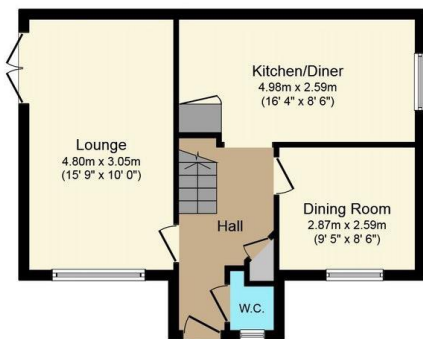
🛏️ 3 🚿 3 🚗 2

- 3 BEDROOMS
- QUIET CUL DE SAC LOCATION
- 2 RECEPTION ROOMS
- BEAUTIFUL FINISH THROUGHOUT
- EASY ACCESS TO TRANSPORT LINKS, SCHOOLING & AMENITIES
- ENSUITE TO BEDROOM 1
- NEWLY FITTED MODERN KITCHEN
- OFF STREET PARKING AND DETACHED GARAGE
- IDEAL FOR A YOUNG FAMILY
- PRIVATE GARDEN



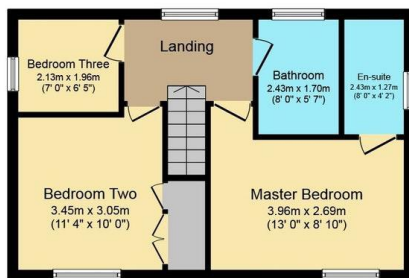
WOW WOW WOW..... A BEAUTIFULLY PRESENTED 3 BEDROOM DETACHED PROPERTY LOCATED IN A SMALL QUIET CUL DE SAC BEING IDEALLY SUITED TO THE YOUNG FAMILY.





**Ground Floor**

Floor area 45.0 sq. m. (484 sq. ft.) approx



**First Floor**

Floor area 43.0 sq. m. (463 sq. ft.) approx



Total floor area 88.0 sq. m. (947 sq. ft.) approx

This Floor Plan is for illustration purposes only and may not be representative of the property. The position and size of doors, windows and other features are approximate. Unauthorized reproduction prohibited. © PropertyBox



**INNOVATIVE  
PROPERTY  
EXPERTS**

**Mallinson & Co**

Office: 01226 414 150

Email: [ben@mallinsonandco.co.uk](mailto:ben@mallinsonandco.co.uk)

Web: [www.mallinsonandco.co.uk](http://www.mallinsonandco.co.uk)

Suite 2, Penistone 1, St. Mary's Street, Penistone, Sheffield S36 6DT